


# Flush Socket Nutrunners

Clecomatic Clutch & StallStall



## 34 Series

**Torque Range:**  
5 – 103 Nm      4 – 76 Ft. Lbs

- External torque adjustment (Clecomatic models)
- Indexable anglehead
- One torque spring to meet specified range
- Oilless blades
- Reversible 



**X Dimension For Flush Socket**

Head	Inches	Millimeters	Socket Size Range
F1	1.54	39	8–15mm
F2	1.69	43	10–15mm
F3	2.32	59	13–21mm

**NOTE:** Models listed are examples. Use chart on bottom of facing page for specific model required but not listed.

Model Number	Free Speed RPM	Torque		Length		Weight		Anglehead				Air Consumption		
		ft.-lbs.	Nm	in.	mm	lbs.	kg	Height in.	mm	Side to Center in.	mm	Air Inlet NPT	Min. Hose I.D.	SCFM
<b>Clecomatic - Lever Start - Reversible</b>														
34RAA09F1	1825	4-7	5-9	17.0	432	3.7	1.7	1.54	39	0.55	14	3/8"	5/16"	34
34RAA16F1	1055	7-12	9-16	17.0	432	3.7	1.7	1.54	39	0.55	14	3/8"	5/16"	34
34RAA28F1	645	10-20*	14-28*	17.8	452	3.9	1.8	1.54	39	0.55	14	3/8"	5/16"	34
34RAA33F2	540	12-24	17-33	18.8	478	4.7	2.1	1.69	43	0.67	17	3/8"	5/16"	34
34RAA47F2	380	17-35	24-47	19.0	483	5.1	2.3	1.69	43	0.67	17	3/8"	5/16"	34
34RAA53F2	265	17-39	24-53	19.0	483	5.1	2.3	1.69	43	0.67	17	3/8"	5/16"	34
34RAA67F3	265	24-49	33-67	20.5	521	5.8	2.6	2.32	59	0.87	22	3/8"	5/16"	34
34RAA94F3	185	35-69	47-94	20.5	521	5.8	2.6	2.32	59	0.87	22	3/8"	5/16"	34
<b>Stall - Lever Start - Reversible</b>														
34RAS10F1	1825	7	10	17.0	432	3.4	1.5	1.54	39	0.55	14	3/8"	5/16"	34
34RAS18F1	1055	13	18	17.0	432	3.4	1.5	1.54	39	0.55	14	3/8"	5/16"	34
34RAS30F1	645	22*	30*	17.8	452	3.5	1.6	1.54	39	0.55	14	3/8"	5/16"	34
34RAS40F2	480	29	40	19.0	483	4.4	2.0	1.69	43	0.67	17	3/8"	5/16"	34
34RAS52F2	380	38	52	19.0	483	4.4	2.0	1.69	43	0.67	17	3/8"	5/16"	34
34RAS58F3	335	43	58	20.5	521	5.5	2.5	2.32	59	0.87	22	3/8"	5/16"	34
34RAS73F3	265	54	73	20.5	521	5.5	2.5	2.32	59	0.87	22	3/8"	5/16"	34
34RAS103F3	185	76	103	20.5	521	5.5	2.5	2.32	59	0.87	22	3/8"	5/16"	34

\* Maximum torque of tool exceeds the maximum torque rating for the head, high maintenance should be expected when operated at the upper torque capacity range.

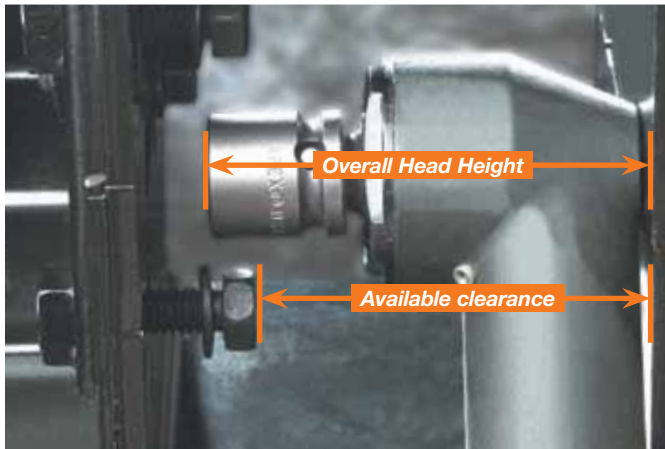
**General:**  
Tool performance rated at 90 psi (620kPa) air pressure.

**Standard Equipment:**  
Operating instructions & service manual  
Suspension bail  
Exhaust Overhose  
Clutch adjustment tool (Clecomatic tools)  
Mounting plate (F3 tools)

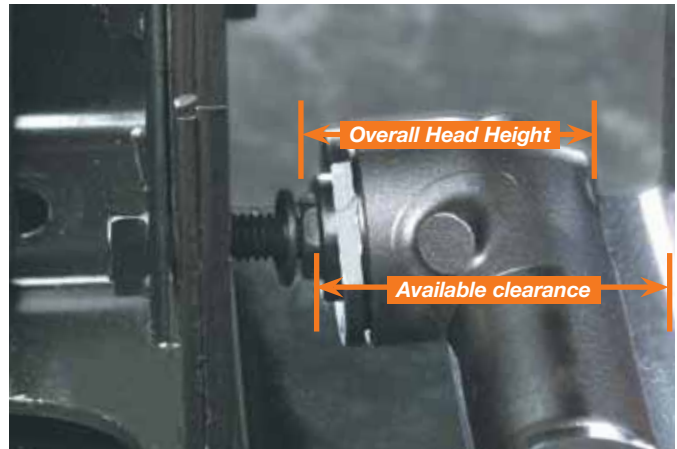
**Optional Equipment:**  
Assembly wrench: 201898  
Torque signal kit: 301937PT  
Non-reversible kit: 204999  
Mounting plates: F1 tools 57217101 57218103  
F2 tools 43287131  
Additional accessories: Page 36



Tight clearance applications, once only accessible by the use of hand tools or crowfoot attachments, can now be tightened by the family of Cleco Flush Socket Pneumatic Tools at a speed that maximizes productivity. Tools equipped with a Clecomatic clutch assure good torque repeatability.



**Standard right angle head with square drive and separate socket will not fit on tight clearance applications. The overall head height is greater than the available clearance.**



**Flush socket tools have plenty of clearance to fit on the same application. Clecomatic flush socket tools tighten with much higher accuracy than tools with crowfoot attachment. The overall head height is less than the available clearance.**

## Model Number Example

### Base Tool

**34 R A A 16 F1**

#### Motor

#### Reversible

#### Tool Style

A - Angle

#### Control

A - Clutch

S - Stall

#### Maximum Torque Output

**F1** Clutch: 9, 16, 28 Nm

Stall: 10, 18, 30 Nm

**F2** Clutch: 33, 47, 53 Nm

Stall: 40, 52 Nm

**F3** Clutch: 67, 94 Nm

Stall: 58, 73, 103 Nm

#### Flush Socket Head

**F1 Head:** 8-15 mm socket capacity

**F2 Head:** 10-15 mm socket capacity

**F3 Head:** 13-21 mm socket capacity

### Socket No. (ordered with base tool)

**FS 1 MG 0 0**

#### Flush Socket Head

1 - F1 Head

2 - F2 Head

3 - F3 Head

#### Socket Type

FS - Flush

#### Output Type

1-Thru Hex 2-Magnetic

#### Extension Length

0 - Flush 2 - 1/4" 4 - 1/2" 6 - 3/4"

#### Socket Sizes

**EC** - 3/8"

**ED** - 7/16"

**EE** - 1/2"

**EF** - 9/16"

**MA** - 7mm

**MB** - 8mm

**MC** - 9mm

**MD** - 10mm

**ME** - 11mm

**MF** - 12mm

**MG** - 13mm

**MH** - 14mm

**MI** - 15mm

**MM** - 19mm

**Note:** When ordering, specify the base tool and order the socket separately. The socket will be installed in the tool before shipment.


# Crowfoot Nutrunners

Clecomatic Clutch & Stall



## 34 Series

**Torque Range:**  
 14 – 30 Nm      10 – 22 Ft. Lbs

- External torque adjustment (Clecomatic models)
- Indexable anglehead
- One torque spring to meet specified range
- Oilless blades
- Reversible 



**NOTE:** Models listed are examples. Use chart on bottom of facing page for specific model required but not listed.

Model Number		Free Speed	Torque Range		Socket Size		Length		Weight		Air Consumption		
15 Degree Head	30 Degree Head	RPM	ft.-lbs.	Nm	in.	mm	in.	mm	lbs.	kg	NPT	I.D.	SCFM
<b>Clecomatic - Lever Start - Reversible</b>													
34RCA30D1	34RCA30D3	425	11-22	15-30	5/16	8	20.0	507	4.7	2.2	3/8"	5/16"	34
<b>Stall - Lever Start - Reversible</b>													
34RCS29D1	34RCS29D3	490	21	29	5/16	8	19.6	497	4.5	2.1	3/8"	5/16"	34

**General:**  
 Tool performance rated at 90 psi (620kPa) air pressure.

**Standard Equipment:**  
 Operating instructions & service manual  
 Suspension bail  
 Exhaust Overhose  
 Clutch adjustment tool (Clecomatic tools)

**Extra Equipment:**  
 Specify socket from page 31

**Optional Equipment:**  
 Assembly wrench: 201898  
 Torque signal kit: 301937PT  
 Non-reversible kit: 204999  
 Additional accessories: Page 36

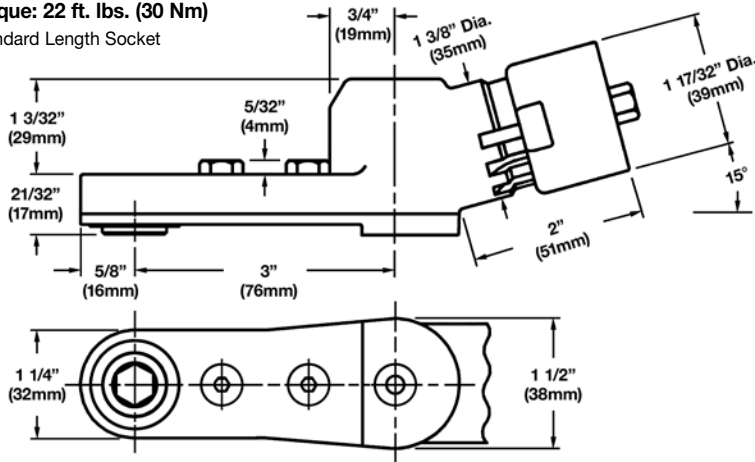
### 15° Head

Part Number: 301071

Maximum Recommended

Torque: 22 ft. lbs. (30 Nm)

Standard Length Socket



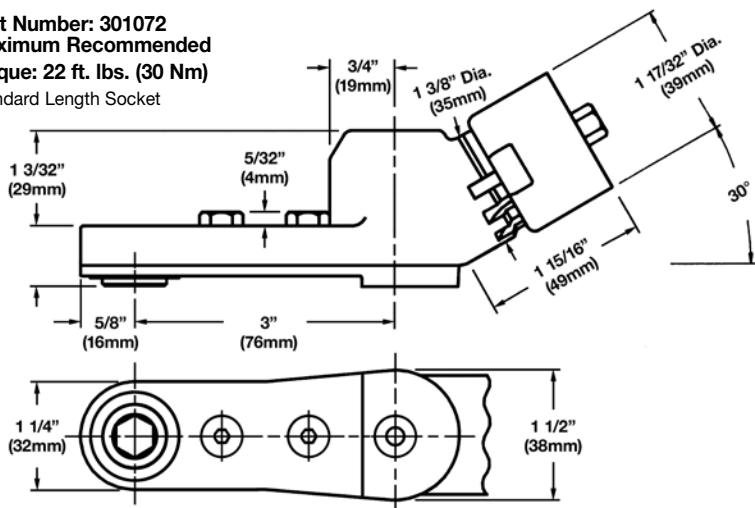
### 30° Head

Part Number: 301072

Maximum Recommended

Torque: 22 ft. lbs. (30 Nm)

Standard Length Socket



### Model Number Example

#### Base Tool

**34 R C A 30 D1**

**Motor**  
34

**Rotation**  
R - Reversible

**Tool Style**  
C - Crowfoot

#### Control

A - Clecomatic  
S - Stall

#### Max Output Torque

Clecomatic: 30  
Stall: 14, 29

#### Tool Termination

D1 15° Head  
D3 30° Head

#### Socket No. (ordered with base tool)

**CS XX X X**

**Crowfoot Socket**

#### Output Type

1 - Thru Hex

#### Extension Length

0 - Flush 4 - 1/2" 6 - 3/4"

#### Sockets

Flush		1/2" Extended	3/4" Extended
EA - 1/4"	MD - 10mm	EB - 5/16"	EE - 1/2"
EC - 3/8"	ME - 11mm	EC - 3/8"	MG - 13mm
ED - 7/16"	MF - 12mm	ED - 7/16"	MH - 14mm
EE - 1/2"	MG - 13mm	EE - 1/2"	
EF - 9/16"	MH - 14mm	EF - 9/16"	
EB - 5/16"	MI - 15mm	MB - 8mm	
EC - 3/8"		MD - 10mm	
ED - 7/16"		ME - 11mm	
EE - 1/2"		MF - 12mm	
EF - 9/16"		MG - 13mm	


# Hold & Drive Nutrunners

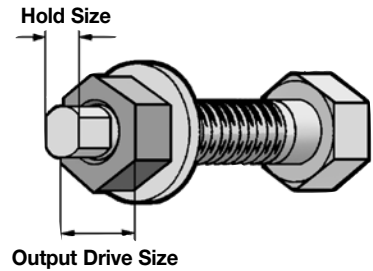
Clecomatic Clutch & Stall

# Cleco®

## 34 Series

**Torque Range:**  
24 – 103 Nm      17 – 76 Ft. Lbs

- External torque adjustment (Clecomatic models)
- Indexable anglehead
- One torque spring to meet specified range
- 1" retraction of hold spindle
- Oilless blades
- Reversible 



**NOTE:** Models listed are examples. Use chart on bottom of facing page for specific model required but not listed.

Model Number	Hold Size	Free Speed RPM	Torque		Length		Weight		Anglehead				Air Consumption		
			ft.-lbs.	Nm	in.	mm	lbs.	kg	Height		Side to Center		NPT	Hose I.D.	SCFM
									in.	mm	in.	mm			
<b>Clecomatic - Lever Start - Reversible</b>															
34RAA53H3	5mm Female Hex	335	17-39	24-53	20.7	526	8.0	3.5	2.4	61	1.06	27	3/8"	5/16"	34
34RAA67H3	7mm Female Hex	265	24-49	33-67	20.7	526	8.0	3.5	2.4	61	1.06	27	3/8"	5/16"	34
34RAA94H3	8mm Female Hex	185	35-69	47-94	20.7	526	8.0	3.5	2.4	61	1.06	27	3/8"	5/16"	34
<b>Stall - Lever Start - Reversible</b>															
34RAS58H3	5mm Female Hex	335	43	58	20.7	526	7.7	3.5	2.4	61	1.06	27	3/8"	5/16"	34
34RAS73H3	T30 Torx	265	54	73	20.7	526	7.7	3.5	2.4	61	1.06	27	3/8"	5/16"	34
34RAS103H3	10mm Female Hex	185	76	103	20.7	526	7.7	3.5	2.4	61	1.06	27	3/8"	5/16"	34

**General:**

Tool performance rated at 90 psi (620kPa) air pressure.

**Standard Equipment:**

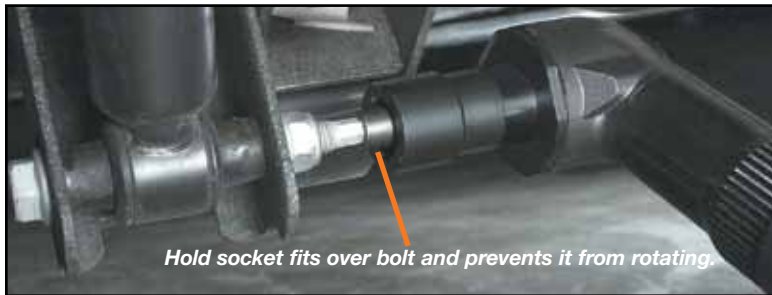
Operating instructions & service manual  
Suspension bail  
Exhaust Overhose  
Clutch adjustment tool (Clecomatic tools)  
Mounting Plate

**Optional Equipment:**

Assembly wrench: 201898  
Torque signal kit: 301937PT  
Non-reversible kit: 204999  
Additional accessories: Page 36



Hold & Drive tool approaches the application.



Hold socket fits over bolt and prevents it from rotating.



Tool is pushed down and started until drive socket engages and tightens nut.



“Hold & Drive” bolts are used with these tools in automotive and truck frame applications. They reduce assembly handling to one person working from one side of the workpiece. The bolt is held stationary by the tool while the nut is tightened from the same side.

### Model Number Example

Base Tool					Drive Socket			Hold Socket			
<b>34</b>	<b>R</b>	<b>A</b>	<b>A</b>	<b>53</b>	<b>H</b>	<b>H3</b>	<b>ML</b>	<b>O</b>	<b>M6</b>	<b>B</b>	
<b>Motor</b>	<b>Reversible</b>								<b>Oval Length (for oval only)</b>		
	<b>Tool Style</b>								<i>(Example: For a 6mm x 8mm oval, this dimension would be MB, but drop the "M" as in M6B.)</i>		
	<b>A - Angle</b>								<b>Hold Socket (dimension across flats, oval also)</b>		
<b>Control</b>									<b>EA</b> - 1/4"	<b>M6</b> - 6mm	<b>MH</b> - 14mm
<b>A</b> - Clutch									<b>EB</b> - 5/16"	<b>MA</b> - 7mm	<b>15</b> - T15
<b>S</b> - Stall									<b>EC</b> - 3/8"	<b>MB</b> - 8mm	<b>20</b> - T20
<b>Maximum Torque Output</b>									<b>ED</b> - 7/16"	<b>MC</b> - 9mm	<b>25</b> - T25
Clutch: 53, 67, 94 Nm									<b>EE</b> - 1/2"	<b>MD</b> - 10mm	<b>30</b> - T30
Stall: 58, 73, 103 Nm									<b>EF</b> - 9/16"	<b>ME</b> - 11mm	<b>40</b> - T40
<b>Tool Termination</b>									<b>EG</b> - 5/8"	<b>MF</b> - 12mm	<b>45</b> - T45
<b>H</b> - Hold & Drive									<b>M5</b> - 5mm	<b>MG</b> - 13mm	
									<i>(Example: On a 6mm x 8mm oval, this dimension would be M6.)</i>		
									<b>Hold Socket Style</b>		
									<b>F</b> - Female Hex	<b>T</b> - Torx	
									<b>M</b> - Male Hex	<b>O</b> - Female oval	
									<b>Drive Socket Size</b>		
									<b>EE</b> - 1/2"	<b>EK</b> - 7/8"	<b>EQ</b> - 1 1/4"
									<b>EF</b> - 9/16"	<b>EL</b> - 15/16"	<b>MG</b> - 13mm
									<b>EG</b> - 5/8"	<b>EM</b> - 1"	<b>MM</b> - 19mm
									<b>EH</b> - 11/16"	<b>EN</b> - 1 1/16"	<b>MH</b> - 14mm
									<b>EI</b> - 3/4"	<b>EO</b> - 1 1/8"	<b>MN</b> - 20mm
									<b>EJ</b> - 13/16"	<b>EP</b> - 1 3/16"	<b>MO</b> - 21mm
											<b>MP</b> - 22mm
											<b>MQ</b> - 23mm
											<b>MR</b> - 24mm
											<b>MS</b> - 25mm
											<b>MT</b> - 26mm
											<b>MU</b> - 27mm
											<b>XX</b> - Special

**Note:** When ordering, specify the base tool and order the socket separately. The socket will be installed in the tool before shipment.

# Tube Nut Wrenches

Clecomatic Clutch

# Cleco®

## 24 Series

**Torque Range:**  
14 - 40 Nm  
19 - 54 Ft. Lbs

- One hand, two position throttle
- External torque adjustment
- Auto alignment socket



24 Series (T2)

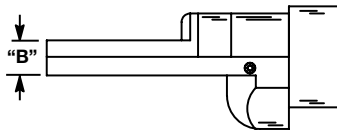
24 Series (T3)

24 Series (T4)

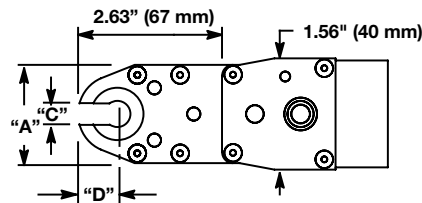
24 Series Power Unit  
With Auto Alignment

### Termination

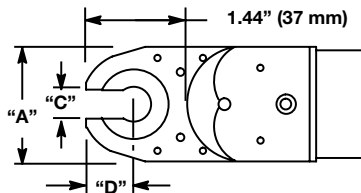
#### T2, T3 & T4 Head Height



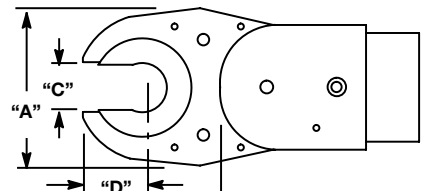
T2 Head



T3 Head



T4 Head



**NOTE:** Models listed are examples. Use chart on bottom of facing page for specific model required but not listed.

Model Number	Free Speed RPM	Torque Range		Weight		Length		Socket Size		"A"		"B"		"C"*		"D"	
		Ft. Lbs.	Nm	lbs.	kg	in.	mm	in.	mm	in.	mm	in.	mm	in.	mm	in.	mm
<b>Power Unit Only</b>																	
24RTA12	670	3.6 - 8.9	5 - 12	2.7	1.2	12	305	NA	NA	NA	NA	NA	NA	NA	NA	NA	NA
<b>Self Aligning</b>																	
24RTA20T2	240	10.4 - 14.7	14 - 20	4.3	2.0	16.8	426	7/16	—	1.42	36	0.55	14	0.28	7.0	0.53	13.5
24RTA30T3	175	14.7 - 22.1	20 - 30	4.5	2.0	16.7	426	9/16	—	1.65	42	0.59	15	0.47	11.9	0.73	18.5
24RTA40T4	130	19.2 - 29.5	26 - 40	5.1	2.3	17.7	449	7/8	—	2.36	60	0.59	15	0.67	17.0	0.93	23.5

\* Varies by socket dimension.

**General:**

Air Inlet: 1/4" NPT

Tool performance rated at 90 psi (620kPa) air pressure.

**Extra Equipment:**

Specify socket from page 35

**Optional Equipment:**

Torque signal kit: 301937PT (see page 39)



## Auto Alignment Head

Tube and hose applications, once only accessible by the use of hand tools, can now be tightened by the Cleco family of Tube Nut Wrenches at a speed that maximizes productivity.

Torque repeatability is assured by the proven Clecomatic clutch and low inertia motor. These models use a single lever for the tightening of the fastener and the return of the socket to the open position. The flexibility coupled with the proven capabilities greatly increases the productivity rate of the assembly line.



*Make sure that the socket is set to the open position. If not, push the throttle lever down half way to release the socket back to the open position.*



*Slide the tool on the fastener and push the throttle lever down fully to run the fastener down.*



*To free the tool, slide the tool off the tightened fastener and operate the throttle lever halfway to release the socket back to the open position.*

## Model Number Example

### Base Tool

**24 R T A 20 T2**

**Motor**  
24

**Tool Style**  
R – Reversing mechanism for socket orientation

**Tool Type**  
T – Tube Nut

**Torque Control**  
A – Clecomatic Clutch

**Max Torque (Nm)**  
T2 - 20 Nm  
T3 - 30 Nm  
T4 - 40 Nm

**Head Size**  
T2 - 20 Nm Max.  
T3 - 30 Nm Max.  
T4 - 40 Nm Max.

### Socket (Order Separately)

**KS2 ED 0 0**

**Head Type**  
KS2 - T2  
KS3 - T3  
KS4 - T4

### Output Type

0 Partial Thru Hex    2 Double Thru Hex  
1 Thru Hex            3 Partial Thru Double Hex

### Extension Length

0 Flush    4 1/2"  
2 1/4"    6 3/4"

### Maximum Hex Socket Sizes

MG, 1/2"    T2 Head Type  
MM, 3/4"    T3 Head Type  
MU, 1 1/16"    T4 Head Type  
00, ## (specials) T3 Head Type

### Socket Sizes

EA - 1/4"	M5 - 5mm	MK - 17mm
EC - 3/8"	M6 - 6mm	ML - 18mm
ED - 7/16"	MA - 7mm	MM - 19mm
EE - 1/2"	MB - 8mm	MN - 20mm
EF - 9/16"	MD - 10mm	MO - 21mm
EH - 11/16"	ME - 11mm	MP - 22mm
EJ - 13/16"	MF - 12mm	MQ - 23mm
EK - 7/8"	MG - 13mm	MR - 24mm
EL - 15/16"	MH - 14mm	MS - 25mm
EM - 1"	MI - 15mm	MT - 26mm
EO - 1 1/8"	MJ - 16mm (5/8")	MU - 27mm (1 1/16")

**Note:** When ordering, specify the base tool and order the socket separately. The socket will be installed in the tool before shipment.